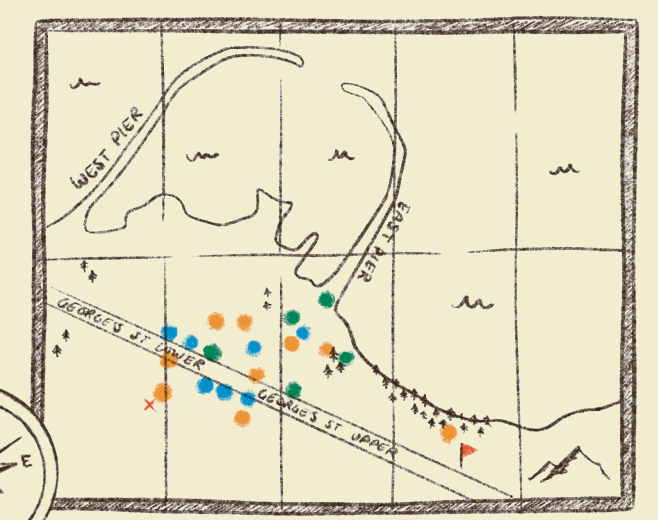
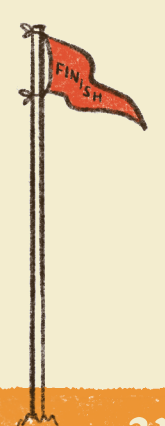
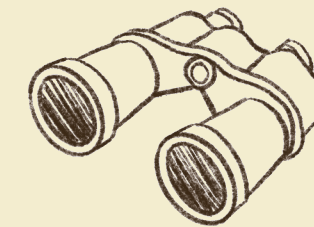
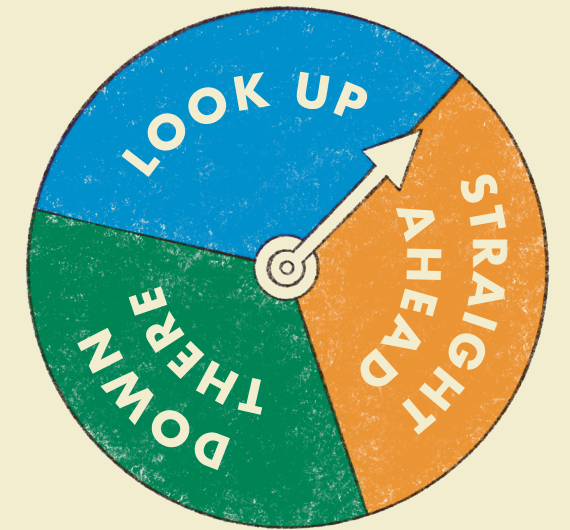
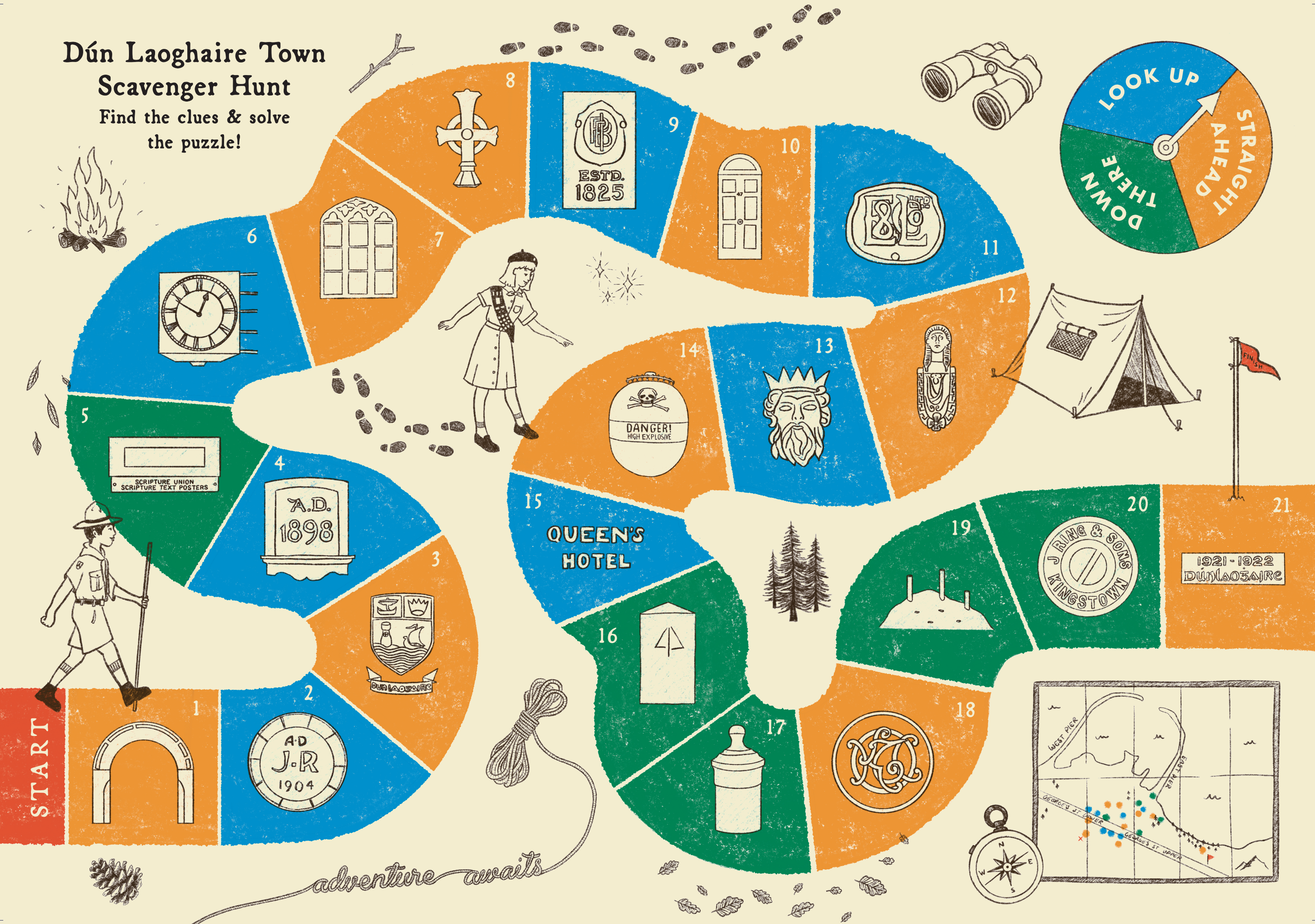
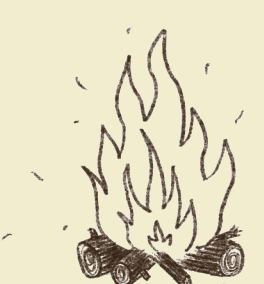


# Dún Laoghaire Town Scavenger Hunt

Find the clues & solve the puzzle!



*adventure awaits*







*A Family Scavenger Hunt of the Curiosities that make Dún Laoghaire Town special*

## HIDDEN IN PLAIN SIGHT

### HIDDEN IN PLAIN SIGHT

**Can you find the curiosities of Dún Laoghaire Town to get the clues to solve the puzzle?**

Our town has a very varied past. In 1821 Dun Leary was changed to Kingstown in honour of George IV's visit and in 1920 it was officially given the name Dún Laoghaire. Whether you are a Dún Laoghaire local or planning your first visit to our town, here's a fun scavenger hunt of the not so obvious clues to our town's interesting history, find them all to solve the puzzle!

**Guide Produced By:**



f @ : @DunLaoghaireTown

**For:**



t : @DunLaoghaireTn

*Content and concept by Eoin Costello  
Design by Brennan & Stevens*

#### Clue 1

##### 42 CROSS AVENUE

From when the forge opened until 1903 The Rt Hon Thomas Earl Of Longford owned the property as Lords Longford and De Vesci owned most of the land Dún Laoghaire is built on. Reflecting the demise of horse-drawn transport the property was sold to Irish Motors Ltd in 1925. *\*Can you tell the date it opened, EST means established by the way.*

#### Clue 2

##### 91 GEORGE'S STREET LOWER

John Ring (JR) and sons were a plumbers and contractors company. The company was founded in 1870. His initials are in the date stone and you can find one of his metal covers in the pavement outside 75 George's Street Upper (see clue 20).

*\*What was our town's name when John worked here?*

#### Clue 3

##### OUTSIDE 56 GEORGE'S STREET LOWER

This is the town's crest on a tram pole. Trams ran through the town from Dalkey to Dublin from 1879 as horse drawn trams, which were replaced by electric trams in 1896 and ran until 1949. The 1930 town crest contains elements of the former Kingstown crest and includes King Laoghaire's crown, a Viking boat representing trade and a castle representing the historical importance of Dún Laoghaire as a fortified settlement. *\*What job does this pole do now?*

#### Clue 4

##### 88 GEORGE'S STREET LOWER

The various red-brick frontages on George's Street with dates ranging from about 1895–1910 arise as a result of a demand by the Longford & De Vesci landlord estates to modernise the frontages of most shops with red brick or risk eviction. When this building was rebuilt in 1898 Thom's Directory records the businesses that occupied the three street level shops as Miss Cash, Confectioner, Murray & Co, grocer & wine merchant and the Universal Meat Co.

*\*What's directly above the date stone?*

#### Clue 5

##### ENGRAVED LETTER BOX 87 GEORGE'S STREET LOWER

The Scripture Union was founded in 1867 with the goal of encouraging people to read the Bible. It continued to operate from this building until 2016. The building was purchased in 2017 for the operations of The Leprosy Mission, an international charity founded in 1874 by Wellesley Bailey and the Monkstown's Quaker family, the Pim sisters. *\*Is the letterbox at the top or the bottom of the door?*

#### Clue 6

##### 64 GEORGE'S STREET LOWER

A large multifaceted clock was erected on this building when it reopened as Findlaters expanded premises in 1900. The flat lime-stone indent where it hung can still be seen above the main entrance to Pennys. *\*What letter of the Pennys sign is it above?*

#### Clue 7

##### 12 EBLANA AVENUE

Built in 1830 "The Eblana Lodge" went through a succession of owners from department store Switzers (1850) to the Vance family of surgeons (1877) to Lt. General Henry Hall from the British Army to McCabe (1879) a Cardinal of the Roman Catholic Church becoming a club for social inclusion in 1910 which it operates as to this day. *\*How many front doors does it have?*

#### Clue 8

##### THE CHURCH CROSS, MARINE ROAD

St. Michael's Church was a large Gothic Revival church consecrated in the 1830s but destroyed by a fire in 1965. This cross in front of the tall church tower is all that remains of the body of the church.

*\*What's unusual about the cross?*

#### Clue 9

##### 1 GEORGE'S STREET UPPER

Look up and you'll see the symbol for the Provincial Bank of Ireland (PBI) which opened in the town in 1922. This former bank building is one of many banks that opened to serve the newly arriving wealthy residents who were attracted to locate in the area by the railway to the city centre. *\*What valuable thing can you get here now?*

#### Clue 10

##### 47 NORTHUMBERLAND AVENUE

In the writing of James Joyce "Kingstown" is mentioned several times in 'The Dubliners' and in 'Ulysses'. After their wedding in 1880 Joyce's parents John and May lived at this address.

*\*What colour is the front door?*

#### Clue 11

##### 22 GEORGE'S STREET UPPER

Go to the corner of the building and look to the very top and you'll see the logo of the owner of the town's first department store which opened in 1906. Seen as a model employer Edward Lee took a strong pro-worker stance during the 1913 lockout.

*\*What's directly above the logo at the top of the building?*

#### Clue 12

##### 101 GEORGE'S STREET UPPER

There was a craze for all things Egyptian when the bank building was built in 1901 hence the Egyptian Pharaoh on the door knocker.

*\*What side of the front door is the knocker on?*

#### Clue 13

##### ABOVE THE ENTRANCE TO THE ROYAL MARINE HOTEL

This is Neptune, the Roman god of the sea with an open crown. It was a popular representation on buildings in England at the end of the 19th century at the time the hotel was reopened in 1865.

*\*What's directly above his crown?*

#### Clue 14

##### NATIONAL MARITIME MUSEUM

During the Second World War the Royal Navy had laid over six thousand naval mines in the Irish Sea. Stormy weather could separate them from their moorings and they could drift ashore. In 1943 a group of locals in Donegal tried to drag a mine up the beach when it exploded killing 18 people instantly.

*\*What was removed from the mine to make it safe for display?*

#### Clue 15

##### 1 HADDINGTON TERRACE

Why would there be a Queen's Hotel in Kingstown? Because Queen Victoria landed and passed through the town four times during her reign with her last visit in 1900 being the final of any British monarch before the establishment of the Irish Free State.

*\*Can you guess what building will give you the best view of this sign?*

#### Clue 16

##### BENCHMARK IN THE WALL ADJOINING THE HARBOUR MASTER COTTAGES/DLR LEXICON

Benchmarks were carved symbols attached to buildings or walls by Ordnance Survey of Ireland (OSI) which was established by Lt.-Col Thomas Colby in 1824 to provide a network of points at which their height had been measured precisely above sea level. The benchmark at this location does not conform to the normal design of an OSI benchmark. *\*Do you know what a benchmark usually looks like?*

#### Clue 17

##### CANNON EMBEDDED IN THE EAST PIER OF THE HARBOUR

The Treaty of Paris at the end of the Crimean War in 1856 required that the victors receive cannons from the Russians as trophies of their victory. This cannon was manufactured in 1799 but the Russian Imperial Crest is missing.

*\*Where can you find what the crest looked like?*

#### Clue 18

##### PEOPLE'S PARK

The park opened in 1890 and was designed by the chairman of Kingstown Town Commission (KTC). There is a large ornate plaque on the side of the park lodge beside the gate recording the names of the Commissioners of the Township of Kingstown.

*\*What was the name of the person who opened the park?*

#### Clue 19

##### THE METALS ADJOINING PEOPLE'S PARK

The Metals is the historic pathway that was used to transport stone from the quarry in Dalkey to the harbour construction site in Dún Laoghaire in the 1820s. Here you can see the laborious process that was used to break up the tough granite stone, multiple holes were dug into the rock and metal chisels were forced into the holes until the rock broke. *\*How many rows of holes do you see in the rock?*

#### Clue 20

##### 75 GEORGE'S STREET UPPER

In the pavement close to the wall you will find a small metal gas cover. What's interesting is that it has the former name of the town and the maker, John Ring of 91 George's Street Lower mentioned in Clue 2 above. *\*What's in the pavement a metre from this cover?*

#### Clue 21

##### MARINE PARADE, NEWTOWNSMITH

Written in Gaelic script the 'Piano' monument commemorates the creation in 1922 of the seafront road to Sandycove. This monument is an early example of the change of name by vote of the elected representatives of the town's name from Kingstown to Dún Laoghaire.

*\*Looking at it why do you think it is called the 'Piano' monument?*

#### \*Answers

1. 1849
2. Kingstown
3. It's a street light
4. A stone urn
5. Bottom
6. Above the two Ns
7. Two
8. It's leaning to one side
9. Jewellery
10. Black
11. Two stone balls
12. Left side
13. A black sign for the hotel
14. The triggers were cut off
15. Go to the top floor of the Lexicon and look towards Sandycove
16. No
17. On the second cannon at the entrance to the pier
18. John Robinson
19. Two
20. A bus stop
21. Because it's shaped like a piano